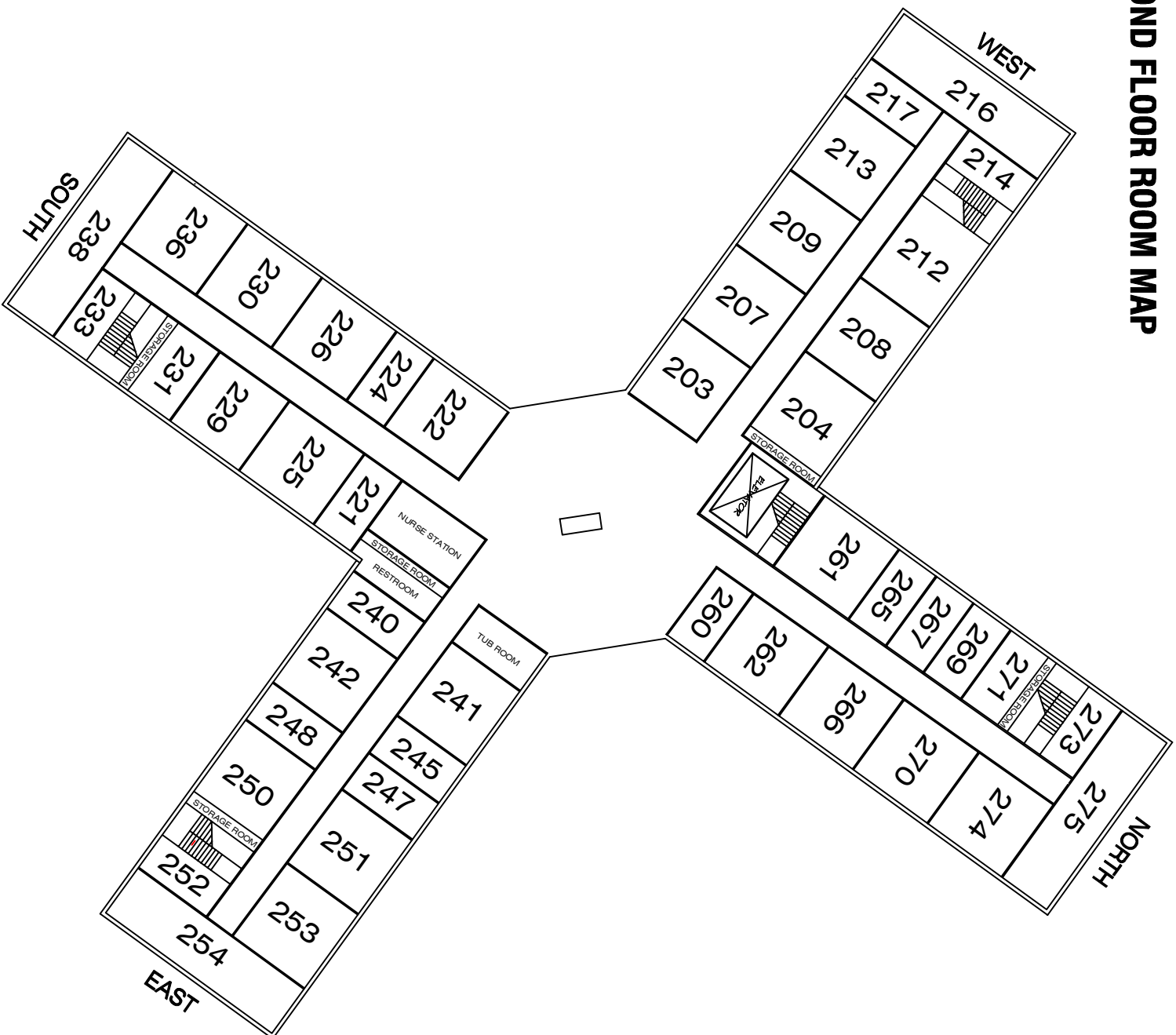


# SECOND FLOOR ROOM MAP



## RIVERVIEW RETIREMENT COMMUNITY

1801 East Upriver Drive  
Spokane WA, 99207-5181  
509.483.8483

PROJECT:  
**ROOM MAP**  
Location:  
Spokane, WA.  
PREPARED FOR:  
RIVERVIEW TERRACE APTS,  
SECOND FLOOR

KEY MAP

NO.	DATE	REVISION
11.1.17		

PROJECT DIRECTOR  
PROJECT MANAGER  
PROJECT ARCHITECT  
PROJECT TEAM MEMBER  
CHECK

TITLE

PROJECT NO.  
DATE  
PROJECT NETWORK PATH

SHEET NUMBER  
N/A